

# Advanced Environmental Instrumentation

## Harnessing the Power of Mobile Computing

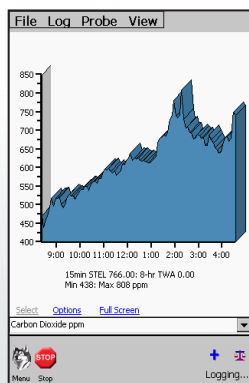


✓ Surveyed

✓ Documented

✓ Reported

Live Graph

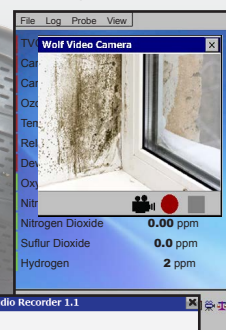


Live Display

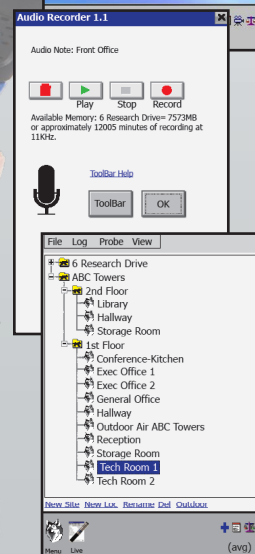
File	Log	Probe	View
TVOC		11	ppb
Carbon Dioxide		848	ppm
Carbon Monoxide		1.4	ppm
Ozone		0.00	ppm
Temperature		24.9	°C
Relative Humidity		29.7	%RH
Formaldehyde		21	ppb
Particulate		61.74	µg/m3
ΔP		0.2	Pa
Barometric		1006	mbar

Example Screens

Video/Photo Notes



Audio Notes



Descriptive Data File Names

GrayWolf is transforming the way that environmental measurements are taken. The AdvancedSense Pro meter runs highly advanced, very user-friendly application software. Display, data-log and annotate (on-site) a broad range of parameters with a single, rugged, cutting edge instrument.

- Simultaneously connect 1 or 2 GrayWolf DirectSense® probes with up to 8 sensors per probe plus a particulate and/or formaldehyde meter
- Available sensors; differential pressure, airspeed, TVOCs, CO<sub>2</sub>, %RH, °C/°F, CO, O<sub>3</sub>, NH<sub>3</sub>, H<sub>2</sub>S, NO, NO<sub>2</sub>, SO<sub>2</sub>, Cl<sub>2</sub>, HCN, H<sub>2</sub>, HF, HCl, F<sub>2</sub>, HCHO and other parameters
- Backlit color touch screen with virtual keyboard (for text input such as descriptive data file)
- Bluetooth for wireless connection to probes (as a standard alternative to cabled connection).
- WiFi for emailing data, live updates and optional GrayWolfLive® remote data access
- **Feature rich** with productivity tools that make your environmental surveys more efficient, more detailed, more reliable:
  - Built-in 2MP camera for photos/videos that attach to data (with annotation)
  - Microphone for audio documentation of surveys
  - Text notes, field (Word template) notes, event notes and more auto-attach to data
  - Speaker for audible queues, alarms and more
  - On-board educational info, application docs, help videos, sensor tips and more
  - Data transfer & reporting software for trend graphs, note management and much more
- Highly intuitive and extremely Easy-To-Use



# ADVANCEDSENSE® PRO

Environmental Test Meter Plus



GRAYWOLF®  
SENSING SOLUTIONS  
Ph. 1-203-402-0477

Email:  
Sales@GrayWolfSensing.com

Website:  
www.GrayWolfSensing.com



# ADVANCEDSENSE<sup>®</sup> PRO

## Environmental Test Meter Plus

### SPECIFICATIONS:

(for additional sensor/probe specifications refer to GrayWolf's DirectSense<sup>®</sup>, pitot tube and thermocouple brochures)

#### General:

- Dimensions:** 96.0mm (3.8in.) w. x 177mm (7.0in.) h. x 47.0mm (1.8in.) d.
- Construction:** Rugged polycarbonate plastic with rubberized side grips. IP64
- Weight:** 700gr (1lb 8.5oz.) Add 50gr (1.5oz.) for auto-zeroing  $\Delta P$  option
- Screen Size:** 3.5" HVGA 320 x 480 color touch screen with backlight
- Memory:** 32GB for data-logging (millions of readings) and notes (photo/video/audio), help videos, documents and WolfSafe<sup>™</sup> auto-data backup
- Camera/LED:** Integral 2MP photo/video camera and 17cd LED illuminating/inspection light
- Wireless Network:** WiFi 802.11 a/b/g with integrated antenna and Bluetooth 4.0 standard (may optionally be ordered with wireless hardware removed)
- Audio:** Integral electret microphone (on front, for audio recording) and 8 ohm speaker (on back, for audio queues, help videos and audio note replay)
- Mounting:** 1/4" - 20 thread (on back) for belt clip, etc. (& for included mini tripod/stand)
- Operating Range:** -10°C to 50°C (15°F to 122°F), 0 to 100 %RH non-condensing

#### Connectors:

- 2 x Lemo 8F pin for GrayWolf DirectSense probes (the AdvancedSense Pro will support up to 4 x DirectSense probes with Y-adapters)
- 1 x Lemo 7F pin for particulate meters or RH-AS2 direct-connect TRH probe
- 2 x sub-mini type K thermocouple temperature sockets. Range -80 to 1100°C (-110 to 2010°F)
- 1 x Lemo 7M pin for formaldehyde meter, or optional USB key download adapter cable
- 1 x USB mini B socket. 1m mini USB B to USB A download cable supplied as standard
- 1 x 12V, 2.1mm DC power socket
- Optional: 2 x 4mm posts for differential pressure tubing

#### Power:

- Battery:** 4250 mAh Lithium Ion rechargeable
- Battery Life:** 16+ hours typical for new battery with backlight off (and probes self-powering)
- The AdvancedSense Pro can power DirectSense probes. Battery life will vary when powering probes, pressure sensors or wireless.
- Recharge time:** 4 hours typical. Red/green front LED displays charging/fully charged status
- Power supply:** 100/240VAC, 50-60Hz external charger. Specify local plug

**All specifications are subject to change without further notice**

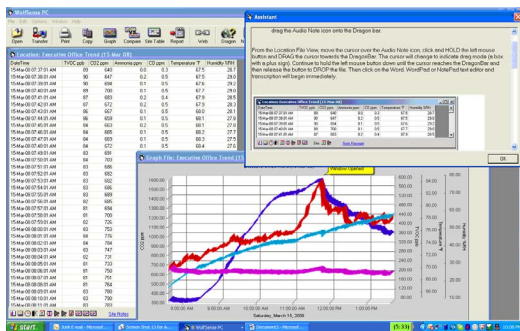
#### Optional Built-in Sensors:

	Differential Pressure ( <b>DP-702LH</b> )	Barometric Pressure ( <b>BP-101A</b> )*
<b>Range</b> (auto-ranging, dual DP sensors)	$\pm 10,000\text{Pa}$ , $\pm 40\text{ inH}_2\text{O}$ , $\pm 1000\text{ mmHg}$ , $\pm 100\text{ mbar}$ , $\pm 70\text{ mmHg}$	600 to 825 mmHg, 800 to 1100mBar, 23.50 to 32.50 inHg, 0.80 to 1.10atm
<b>Resolution</b>	0.1 Pa, 0.001 inH <sub>2</sub> O, 0.01 mmHg, 0.001 mbar, 0.001 mmHg	0.1mmHg, 0.1mBar, 0.01 inHg, 0.01atm
<b>Accuracy</b> (auto-zeroing enabled)	$\pm 1\%$ of rdg $\pm 0.1\text{Pa}$ up to 250Pa, $\pm 1\%$ rdg $\pm 4\text{Pa}$ >250Pa ( $\pm 1\%$ of rdg $\pm 0.001\text{ inH}_2\text{O}$ to 1.000 inH <sub>2</sub> O, $\pm 1\%$ rdg $\pm 0.015\text{ inH}_2\text{O}$ >1.000 inH <sub>2</sub> O)	$\pm 0.1\%$ rdg

Differential Pressure is auto-zeroing (every 2 minutes by default but zeroing frequency is user adjustable to 5 min. or OFF)

\*The barometric pressure sensor, when installed, will compensate mass concentration readings ( $\mu\text{g}/\text{m}^3$ ) for pressure changes.

**WolfSense<sup>®</sup> PC** data transfer and analysis software supplied as standard



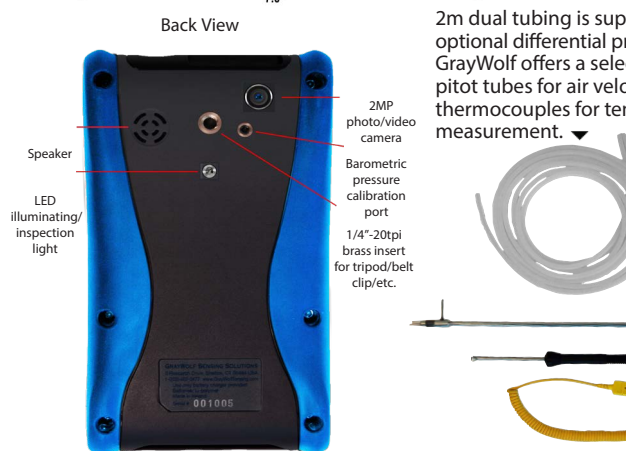
**GRAYWOLF SENSING SOLUTIONS**  
6 Research Drive (Worldwide Headquarters)  
Shelton, CT 06484 USA  
Ph. (1)203-402-0477  
800-218-7997

Email: [Salesteam@GrayWolfSensing.com](mailto:Salesteam@GrayWolfSensing.com)  
[www.GrayWolfSensing.com](http://www.GrayWolfSensing.com)

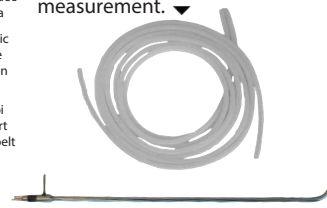
### Measure Smart



### Report Efficiently



2m dual tubing is supplied with optional differential pressure sensor. GrayWolf offers a selection of pitot tubes for air velocity and K thermocouples for temperature measurement.



**PCC-AS01** pouch with neck-strap for hands-free surveys. Also eyelets for camera/inspection light and hand-strap/belt-loop.



**PCC-20A** Hardshell case holds AdvS Pro, probes (DSII inside or extended for secure monitoring) & accessories. Larger cases also available.

Cloud Platform Data Application, Advanced Reporting Software, Calibration kits and other accessories are available from GrayWolf.

View them online at:  
[graywolvesensing.com/accessories/](http://graywolvesensing.com/accessories/)

**GRAYWOLF SENSING SOLUTIONS**  
Annacotty Industrial Park, Unit 1C  
Annacotty, County Limerick  
Ireland  
Ph. (353) 61358044