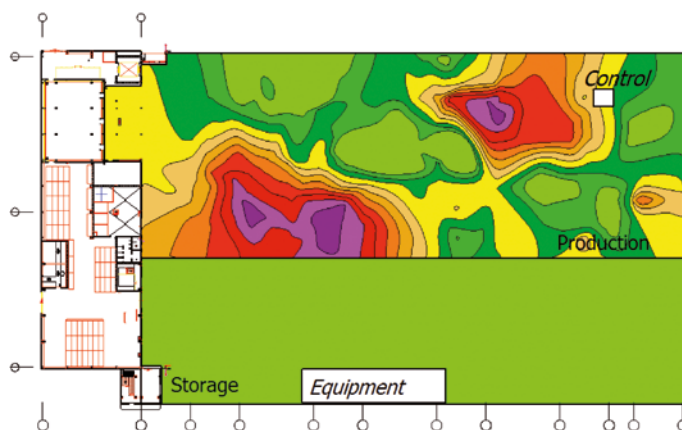




NoiseAtWork

software for mapping noise levels at workplaces



Key features

- For industrial and occupational hygienists
- For noise and other measured indicators
- Interpolated contour maps with just a few clicks, no CAD needed
- Easy to use, fit for purpose and cost-efficient
- Intuitive interface, learned within minutes

Optional add-ons

- Noise Dose calculations based on LEX and TWA
- Noise Prediction based on Sabine and VDI 2720

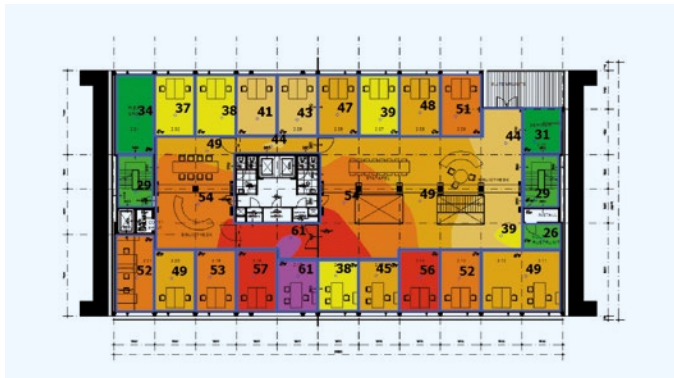
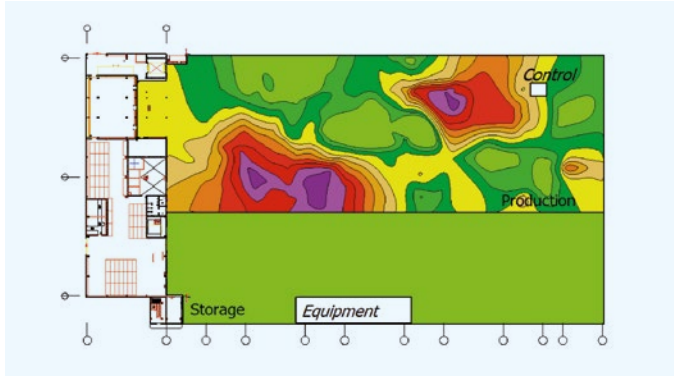


Software for sustainability, safety and health



NoiseAtWork

Software for creating interpolated contour maps for noise and other measured airborne contaminant or human comfort survey data at workplaces such as factories and offices. Optional add-ons for Noise Dose calculations based on LEX en TWA and Noise Prediction based on Sabine and VDI 2720.

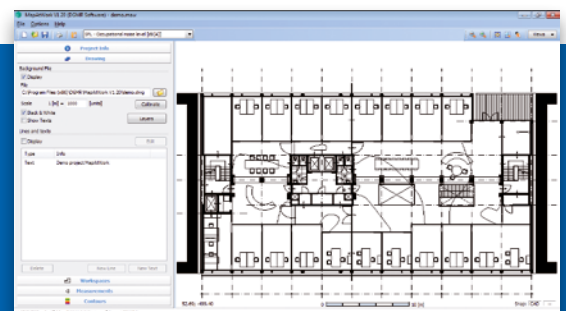


NoiseAtWork is dedicated and user friendly software for mapping noise and any other type of measurement result. The software supports up to 10 different indicators per individual data point. NoiseAtWork includes several pre-

defined indicators such as Occupational noise level in dB(A), CO₂ concentration in ppm, PM_{2.5} concentration in µg/m³, Temperature in °C, Illuminance level in lux and Daylight factor in %. Other indicators can be added by the user.



STEP 1 Mark the measurement locations on your paper map (or use a scanned map on your tablet with NoiseAtWork Companion).



STEP 2 Start the software, create a new project and open your scanned map or CAD drawing.

Option	NoiseAtWork configurations			
	Type A	Type B	Type C	Type D
Mapping of noise levels in dB(A) and any other measured indicator as interpolated contours.	✓	✓	✓	✓
Noise Dose calculation based on LEX and TWA		✓		✓
Noise Prediction based on Sabine and VDI 2720			✓	✓

Free NoiseAtWork Companion app

NoiseAtWork is powerful and easy to use software for visualisation and reporting of measurement results. Key aspects are fit for purpose, easy to use and cost efficient.

Fit for purpose

Dedicated, fit for purpose software with exactly those options you really need.

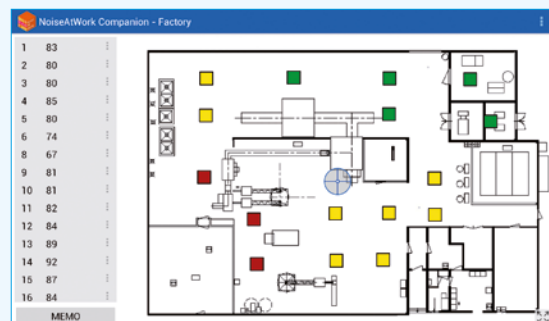
Easy to use

Extremely easy to use and fully interactive. The software can be learned within minutes. After watching the instruction video you can start working.

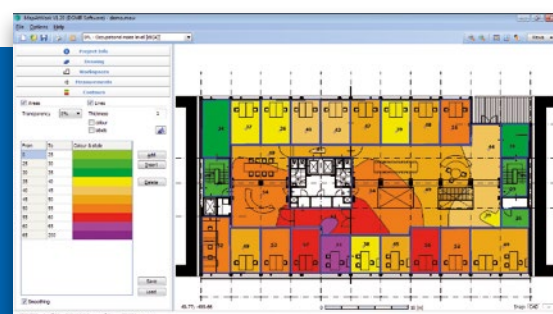
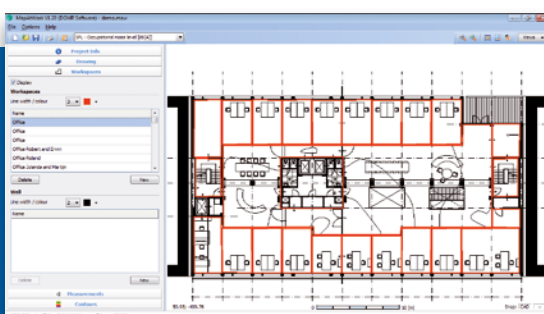
Cost efficient

The software will significantly reduce the time you normally spend on getting your measurement maps done.

NoiseAtWork Companion is a free android app and used for digitizing measurement locations in workspaces on a digital map. Per location also a measured value can be added. The values can be noise indicators in dB(A) but can also be any other type of indicator like temperature, CO₂, lighting, humidity and dust. The digitized locations and values can be imported directly in the NoiseAtWork PC software. By using NoiseAtWork Companion there is no need any more to use the traditional paper map and clipboard.



NoiseAtWork Companion with color coded contour classes



STEP 3 Draw the workspaces and inner walls on the map.

STEP 4 Click on the measurement locations and enter the results (or import from NoiseAtWork Companion). Automatically the contours will be shown.



Specifications

Workstation and network licenses

Licenses are available for single use on a workstation or for concurrent use on a network. Licenses can be purchased as perpetual licenses or as 1 year subscription.

Free updates and support

Support on the latest version is free. Updates e.g. from version 1.1 to 1.2 are free. Upgrades e.g. from version 1 to 2 are offered separately.

Data input

Scanned images in BMP/JPG formats as well as CAD drawings in DXF/ DWG format can be used directly as background map. Measurements are entered by clicking on the map or by import from NoiseAtWork Companion. Measurements can also be assigned by copy/paste from Excel.

Reporting

Reporting is available via print output or to PDF files with selectable project content, copy to clipboard, save as high resolution JPG/BMP file and save as SHP or DXF file.

In non-licensed mode the software runs as a free Project Viewer, allowing others to share and view project files produced by the licensed user. In Viewer mode the project cannot be edited or printed.

System requirements

Windows Vista, Windows 7, 8 or 10.
NoiseAtWork is available in different languages.

Our software is in use by consultants, industries, authorities and universities

About DGMR Software

DGMR Software is a division of DGMR Consulting Engineers on sustainability, safety and health. DGMR Consulting Engineers is established in 1980, located in The Netherlands and has 160 employees divided over 9 divisions. The DGMR Software division employs 12 people.

DGMR Software

Casuariestraat 5
NL-2511 VB Den Haag
The Netherlands

t +31 88 3467 500
e info@dgmrsoftware.com
i www.dgmrsoftware.com

We are developing, distributing and supporting software based on the DGMR knowledge domains. With our software, we have developed an excellent reputation both nationally and internationally.

Want to know more?

For more information on NoiseAtWork, please contact:

Erwin Hartog van Banda

Senior Consultant Software & IT

e ha@dgmr.nl
t +31 6 51 26 19 65



Software for sustainability, safety and health