



✓ Surveyed

✓ Documented

✓ Reported

### Features:

- View / Log 6 Particle Sizes Simultaneously
- 0.3 to 0.5 $\mu$ m, 0.5 to 1.0 $\mu$ m, 1.0 to 2.5 $\mu$ m, 2.5 to 5.0 $\mu$ m, 5.0 to 10.0 $\mu$ m, 10+  $\mu$ m
- View / Log as differential or cumulative
- Alternatively display  $\mu$ g/m<sup>3</sup> in Concentration Mode including approximate PM2.5, PM10, TSP
- 0.1 CFM (2.8 LPM) Flow Rate
- Color Touch Screen Interface
- Removable / Rechargeable Li-Ion Battery
- Optional Temperature / Relative Humidity Probe
- Internal Audible Alarm
- 2-Year Warranty
- Belt clip for walk-thru surveys or attachment to Tripods or to GrayWolf Area Monitors
- On-board Memory (stores 3,000 samples)
- Supplied with GrayWolf's WolfSense® PC Software for data download and analysis
- Optional WolfSense ARG Automated Report Generation Software
- Use as a stand-alone or interface to GrayWolf's DirectSense®, WolfPack® and AdvancedSense® for Enhanced Logging and Expanded Features

### Benefits:

- Easy to Use (User-Friendly Interface)
- Expands your GrayWolf DirectSense, WolfPack, and AdvancedSense parameters
- Low Cost of Ownership
- Efficiently Combines Particle Counting and Mass Concentration read-out in one Meter



# PC-3016A

6-Channel Particle Counter

**Use the PC-3016A as a stand-alone particle counter, plug it into a mobile computer or into a sophisticated WolfPack/AdvancedSense system for simultaneous connection with GrayWolf's DirectSense probes.**

- Ergonomically designed and lightweight, the PC-3016A is the most advanced handheld particle counter on the market.
- Easily download data from the PC-3016A using the included WolfSense PC Software to create high quality trend/bar graphs/tables, use WolfSense's advanced organizational features or simply export to Microsoft Excel®.
- Offering 6 channels of simultaneous particle counting, the PC-3016A displays both cumulative and differential particle count data on its easy-to-read 3.5" (8.9 cm) color touch screen.
- Alternate displayed/logged readings from particle counts to approximate mass concentration ( $\mu$ g/m<sup>3</sup>).
- Optionally add Advanced Report Generator software for extremely efficient, automated reporting of particle count/concentration data.
- Monitor particulate levels, even in those "hard-to-reach" areas where two-handed operation is unsafe.



**GRAYWOLF®**  
SENSING SOLUTIONS  
PH. 1-203-402-0477  
FAX: 1-203-402-0478

EMAIL:  
SALESTEAM@GRAYWOLFSENSING.COM

WEBSITE:  
WWW.GRAYWOLFSENSING.COM



# PC-3016A

## 6-channel Particle Counter

### Specifications: PC-3016A

**Size Range:** 0.3 - 10.0  $\mu\text{m}+$  (145  $\mu\text{m}$  max into inlet)

**Channel Sizes:** 0.3, 0.5, 1.0, 2.5, 5.0, 10.0  $\mu\text{m}$

Optional: inquire about other size cuts (Particle Count only)

**Flow Rate:** 0.1 CFM (2.83 LPM)

**Counting Efficiency:** 50% @ 0.3  $\mu\text{m}$ ; 100% for Particles >0.45  $\mu\text{m}$  (per ISO 21501-4)

**Laser Source:** Extreme Life Laser Diode with >20 Years MTTF

**Zero Count Level:** <1 Count / 5 minutes (per ISO 21501-4)

**Concentration Limits:** 4,000,000 Particles /  $\text{ft}^3$  @ 5% Coincidence Loss

**Calibration:** Meets ISO 21501-4 Calibration using NIST Traceable PSL Spheres, DMA and Condensation Particle Counter

**Count Modes:** Automatic, Manual, Beep, Concentration, Cumulative/Differential, Mass Concentration

**Data Storage (on-board):** 3,000 Sample Records, Rotating Buffer (includes particle and environmental data, plus alphanumeric location and time)

**Communication Modes:** RS232 converted to USB (via included RJ-45 to USB cable) for PCs or Printers. RS232 to AdvancedSense, WolfPack or PPC w/GrayWolf cable/software.

**Touch Screen Display:** 3.5" (8.89cm, Color TFT)

**Alarms:** Internal Alarm Buzzer. Alarms on Counts, Low Battery, Sensor Failure

**Sample Inlet:** Isokinetic Sampling Probe

**Sample Output:** Internally Filtered to HEPA Standards (>99.97% @ 0.3 $\mu\text{m}$ )

**Vacuum Source:** Internal Pump, Automatic Flow Control

**Enclosure:** High Impact Injection Molded Plastic (with handle)

**Power:** External 100-240V, 50-60Hz Power Supply (12VDC, 1.25A)

**Battery:** Li-Ion, Removable & Rechargeable

**Dimensions:** 8.75" x 5.0" x 2.5" (22.23 x 12.7 x 6.35 cm)

**Weight:** 2.2lb (1kg)

**Languages:** English (U.S.), Deutsch, Español, François, Italiano

### Environmental Conditions:

Operating: 50°F to 104°F (10°C to 40°C) / 20% RH to 95% RH non-condensing

Storage: 14°F to 122°F (-10°C to 50°C) / Up to 98% RH non-condensing

### Accessories Included:

Operating manual on CD, Removable battery, Isokinetic Sample Probe (direct mount), Purge (zeroing) Filter, 100/240V AC charger/adaptor, Belt Clip, WolfSense PC Data Analysis Software.

### Options:

**PC-GW6AAS-KIT** also includes hardshell carrying case, interface cable for interface to AdvancedSense (specify **PC-GW6AWP-KIT** for WolfPack).

**PC-GW6ADS-KIT** also includes hardshell carrying case, mobile PC interface cable, serial card and WolfSense PPC software for interface to Pocket PCs.

**PC-GW6-RHCF** Temperature/Relative Humidity Probe 32-122°F (0-50°C), +/- 1°F (0.5°C), 15-90% +/- 2% RH

**WolfSense ARG** Advanced Reporting Software

**PCC-GW6** Hardshell case. Dimensions: 38.1cm x 33.0cm x 17.8cm (15" x 13" x 7")

**AD-3016-L7** Cable for interfacing PC-3016A to AdvancedSense Meter

**AD-3016-L6P** Cable for interfacing PC-3016A to WolfPack (includes power socket for powering PC-3016A from the WolfPack)

**ACC-SCCF** Serial Card to interface PC-3016A to mobile PCs via CF card slot

**WS-PPC** WolfSense application software for PocketPC interface

**WS-LAP** WolfSense application for WIN XP/7/8 PC interface

GrayWolf Sensing Solutions reserves the right to change specifications without notice.

MEASURE SMART

REPORT EFFICIENTLY



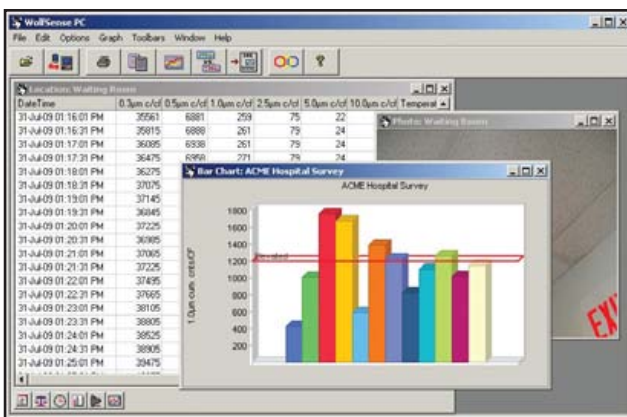
Optional  
PC-GW6-RHCF  
%RH, °F/°C probe  
(removable)



PCC-GW6  
Hard-Shell  
Case



Example Mobile  
PC Screen (optional  
interface enables  
GrayWolf's in-situ  
documentation features)



Example  
WolfSense  
PC Screen  
data  
transfer  
& analysis  
software  
(supplied as  
standard)

Example  
WolfSense  
ARG report  
(optional  
automated  
report  
generation  
software)



**GRAYWOLF  
SENSING SOLUTIONS**

6 RESEARCH DRIVE  
SHELTON, CT 06484 USA

PH. (1)203-402-0477  
800-218-7997

FAX: (1)203-402-0478



EMAIL: SALESTEAM@GRAYWOLFSENSING.COM

WWW.GRAYWOLFSENSING.COM

**GRAYWOLF  
SENSING SOLUTIONS**

TUAMGRANEY INDUSTRIAL ESTATE  
TUAMGRANEY, CO CLARE, IRELAND

PH. (353)61921736  
FAX: (353)61921528