



Data Management Software for Environmental Measurement AS-60



A free trial version is
**now available on
our website.**

Comprehensive Software for Environmental Noise Measurement

AS-60 allows you to graphically display measurement data, perform calculation processing and excluded sounds processing, create reports, output files, and play real sounds.

Easy to use

**Quick and easy
report creation**

Data combination

**Simultaneously display
multiple data items
(up to eight data items)**

**Data stored in a data recorder
can also be loaded
(CSV files saved by the DA-40 Viewer)**

Easy to use

The screenshot displays the AS-60 software interface with several callouts highlighting its ease of use:

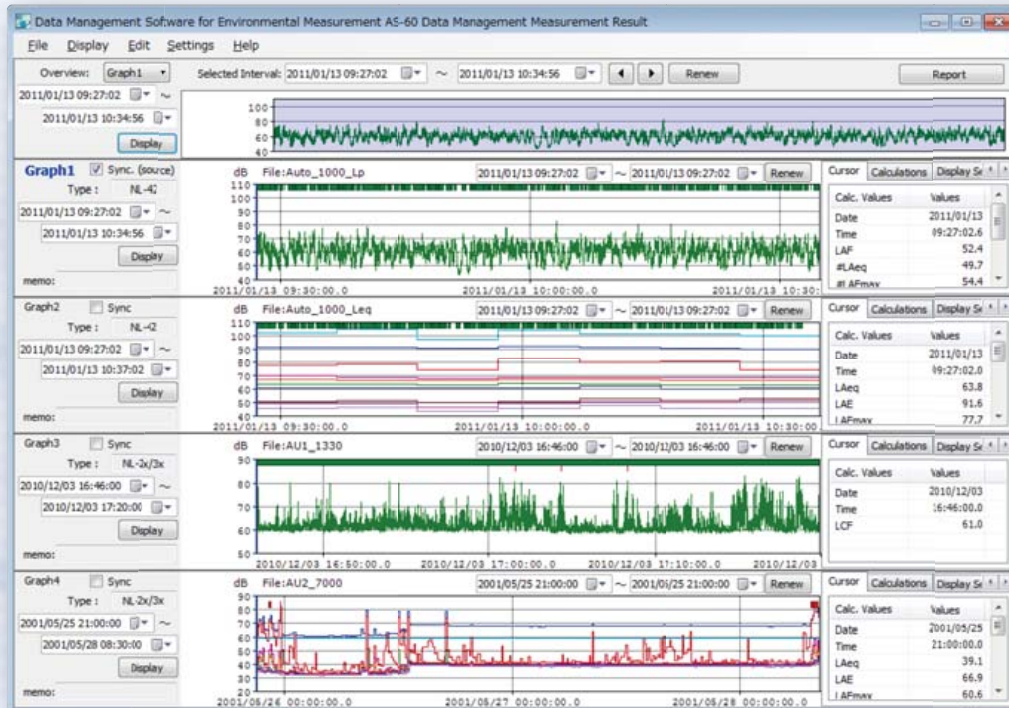
- Drag-and-drop**: A red arrow points from a file icon on the desktop to the software window.
- Simply drag-and-drop to read and display data**: A blue arrow points from a file icon to the 'File' menu.
- Single click to play wave files**: A blue arrow points to the 'Play' button in the 'File' menu.
- Displays a list of options for the next operation**: A blue arrow points to the 'Calculate' menu.
- Copies the calculations results to the clipboard**: A blue arrow points to the 'Copy Calculations' button.

The main window shows a graph of noise levels (dB) over time, with a table of calculated values on the right:

Calc. Values	Values
LAeq	63
LAE	97
LAF	54.3
LAeq	54.1
LAmax	54.8

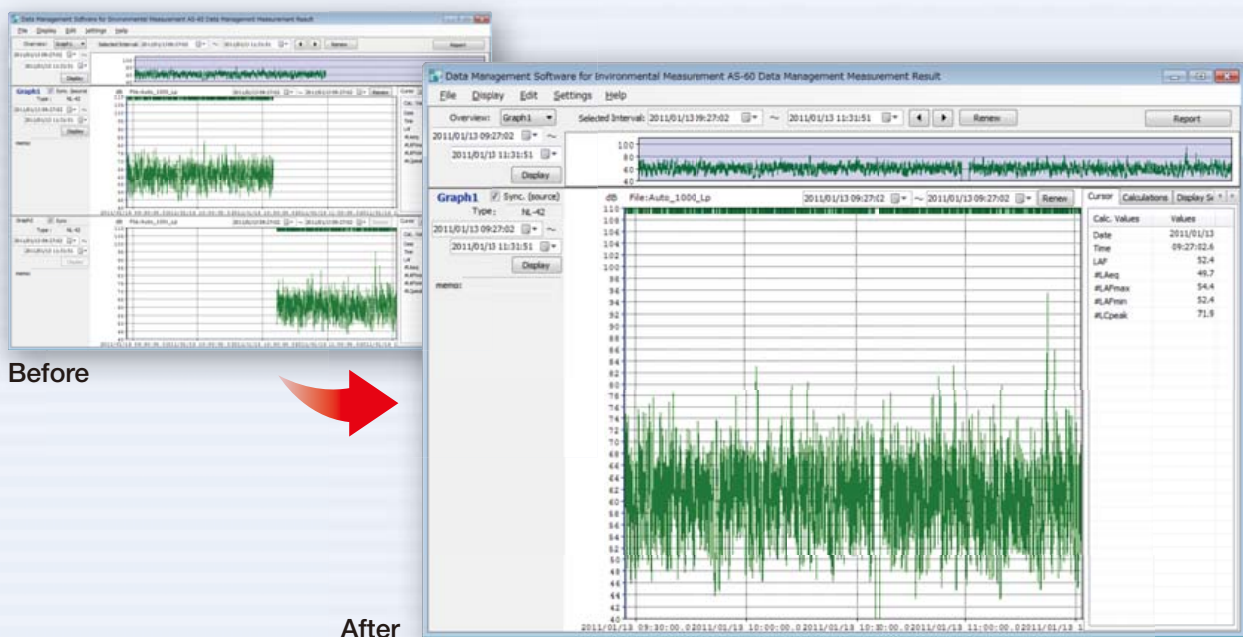
Simultaneously display and edit multiple data items

- Simultaneously display and edit data measured at multiple sites*
 - Data measured by each sound level meter in L_p mode (Auto1) and L_{eq} mode (Auto2) is displayed simultaneously.
- * Up to eight data items can be loaded simultaneously, and the graphs for up to four data items can be displayed simultaneously.



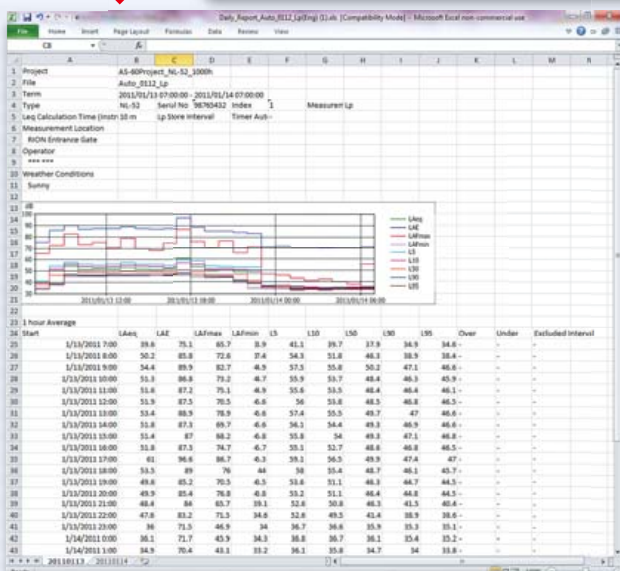
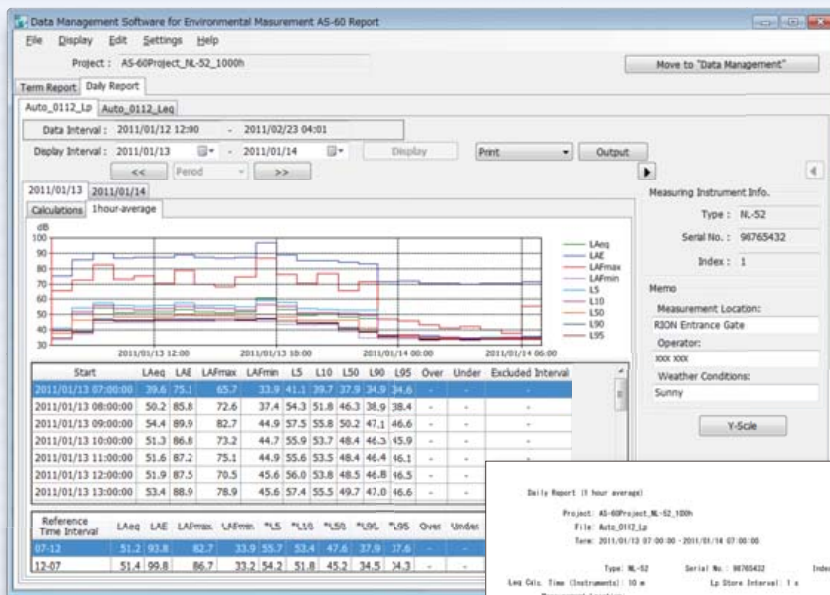
Data combination

- This function allows you to combine multiple items of measurement data that were divided as a result of battery replacement or some other reason.
- The combined data can be displayed and edited as a single file (only data saved by NL-42/52).

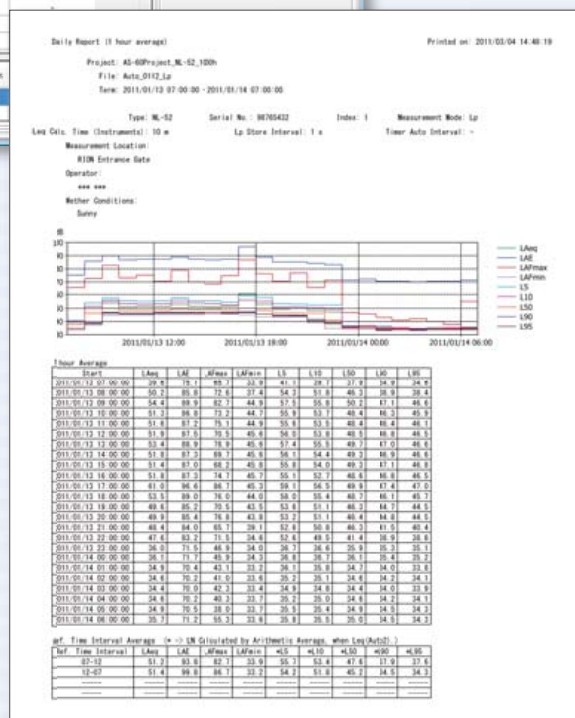


Report Creation

- Easy creation of reports such as daily logs
- Allows you to print collected data and output to an Excel file or text file.



Data output as an Excel file



Printing a report

Supported models

NL-52/42

NL-32/31/22/21

DA-40Viewer

AS-60 is planned to be used also for the following models

Vibration
level meter

Sound level meter
NA-28

Data recorder
DA-20/40

Recommended computer specifications

CPU	Intel Core™2 Duo 2.0 GHz or higher
RAM	2 GB or more
DISPLAY	XGA (1 024 x 768) or more, at least 65 536 colors
OS	Microsoft Windows XP Professional 32 bit, Microsoft Windows 7 Professional 32 bit and 64 bit

*If AS-60 is used for the NL-52/42, the NX-42EX is also needed.

* Specifications subject to change without notice.

Distributed by:

RION CO., LTD.
http://www.rion.co.jp/english/

3-20-41, Higashimotomachi, Kokubunji, Tokyo 185-8533, Japan
Tel: +81-42-359-7888 Fax: +81-42-359-7442