

ADVANCEDSENSE[®] AIR DIRECTSENSE[®] AIR

Air Velocity Meters



GRAYWOLF[®]
SENSING SOLUTIONS
PH. 1-203-402-0477
FAX: 1-203-402-0478

EMAIL:
SALESTEAM@GRAYWOLFSENSING.COM

WEBSITE:
WWW.GRAYWOLFSENSING.COM



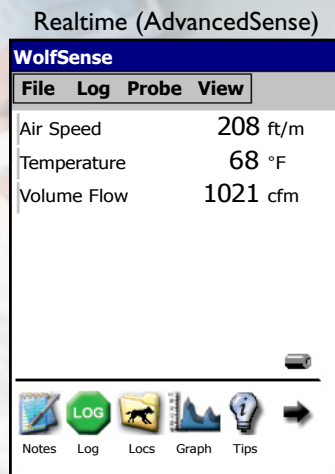
Advanced Environmental Instrumentation Harnessing the Power of Mobile Computing



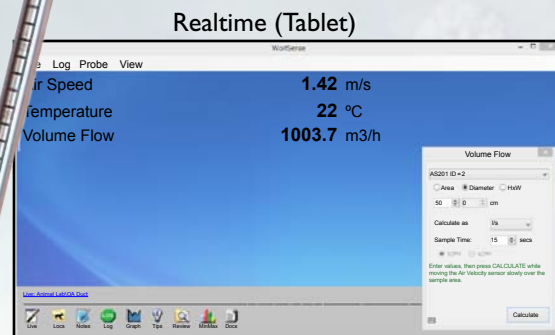
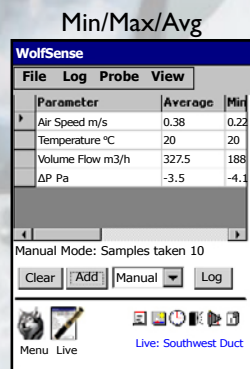
✓ Surveyed

✓ Documented

✓ Reported



Example
Screens



▲ Attach Photo, Text, Audio and other notes in the field

The AdvancedSense Air and DirectSense Air integrate precision thermal “hotwire” anemometer sensor technology and GrayWolf’s comprehensive software with the power and performance of mobile PC computing. Intuitive and Easy-To-Use. Airspeed measurement has evolved to an advanced new level.

- Measures Air Velocity, Volume Flow & °C/°F (with options for more parameters)
- Patented telescoping hotwire probe design eliminates internal cabling, avoids cable kinking and chafing
- Large, tactile color display of measurements (alternatively display a graph)
- Versatile Averaging function
- Extremely Easy-To-Use
- Optional fumehood face velocity and duct traverse calculation software
- Stores measurements along with date, time, text, audio, drawings and more
- Optional 90 degree articulating probe
- Graduated markings (cm & inches)
- Optional auto-zeroing Differential Pressure & pitot tubes (AdvancedSense only)

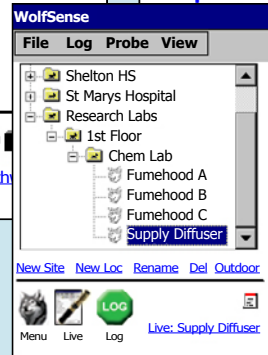
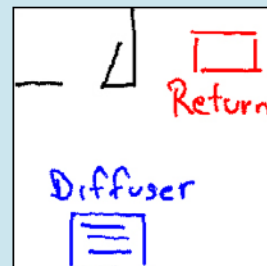
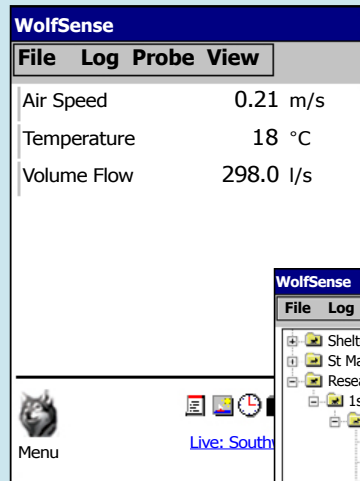
Superior Technology for Enhanced Airspeed Testing

Connect probes to your choice of Platforms

AdvancedSense Rugged, Multifunction Data-logger ▼



Example Screens (AdvancedSense)

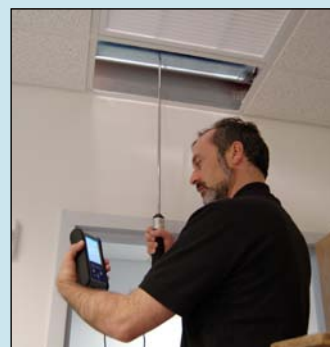


Air Velocity and Volume Flow readings are displayed on the color tactile screen. An average can be simultaneously displayed; calculated from a choice of manually input readings or measurements auto-updated at one-second intervals.

“Snapshot” measurements can be logged at the push of a button or a tap of the screen. Enter a description of the measurement location plus text notes, Word field forms, graphic files, audio memos, statistics, calibration data and more. Save time, improve efficiency and enhance documentation.

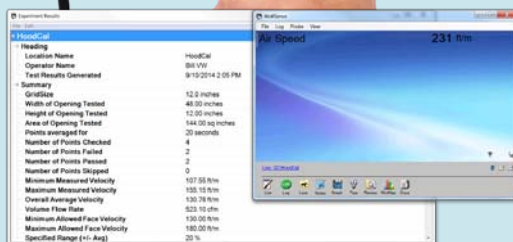
DuctCal®

GrayWolf's DuctCal software add-on module for accurate Volume Flow measurement calculates and displays measurement points, walking the user through a choice of Log-Tchebycheff or Equal Area duct traverses.



The DirectSense AIR is supplied with WolfSense® PC software for desktop data transfer, analysis and graph generation. Optional WolfSense ARG software automates the reporting process.

Example ▶ Windows PC Screen (fumehood report and real time air velocity window)



Low cost **WIN 8 Tablets** are available from GrayWolf, with application appropriate accessories ▼



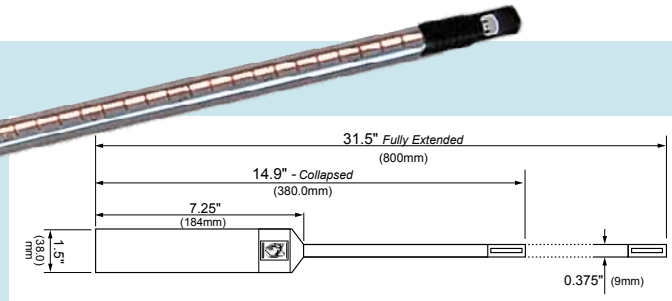
Or connect probes to your own Windows PC



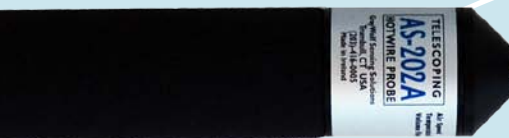
AIR VELOCITY VOLUME FLOW



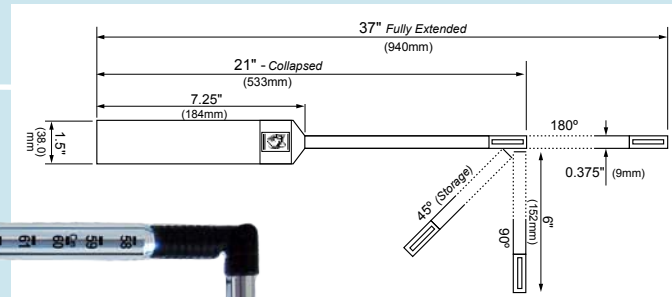
AS-201



The AS-201 and AS-202A hotwire anemometer probes measure air velocity over a wide range, yet have exceptional low velocity accuracy and repeatability. Both probes telescope, while the AS-202A also has an articulating tip (excellent for reaching ceiling diffusers/filters and for fumehood face velocity balancing). The probes are ideally suited for applications ranging from IAQ (thermal comfort), to cleanrooms, to general HVAC testing.

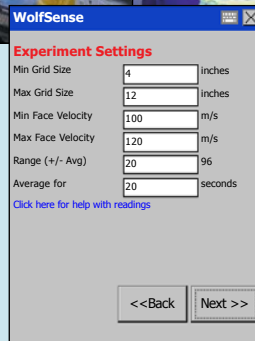
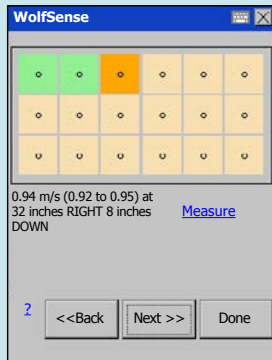
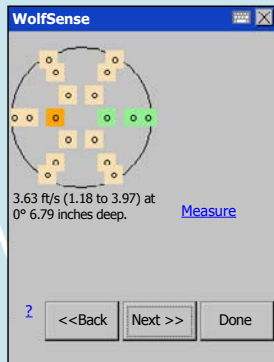
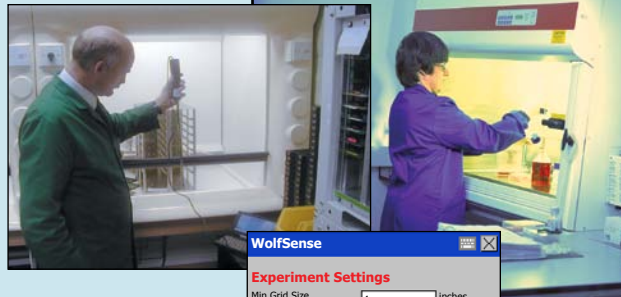


AS-202A



HoodCal®

Fumehood face velocity software guides the user step-by-step from air velocity sensor positioning on through to a detailed report that prints each measurement point and PASS/FAILs the test based on user selected criteria.



PIT-504

Unique Pitot Tube with screw-in extensions 13" (33cm) up to 55" (140cm) standard, or up to 81" (205cm) w/optional extensions



TC-305S/302P
K-type °F/°C probes for immersion/surface & other apps

IQ-610

%RH, Carbon Dioxide, TVOCs, CO, °F/°C and more (O₃, NH₃, NO₂, NO, H₂S or others). Up to 6 sensors in one probe (for IAQ applications).



PC-3016A
6-Channel Particle Counter



Expand your measurement capabilities with additional parameters available from GrayWolf; and more are on their way!



ADVANCEDSENSE[®] DIRECTSENSE[®] AIR

Air Velocity Meter

SPECIFICATIONS: AS-201/AS-202A

Air Velocity (hotwire): Range: 0–6,000 ft/min (0.00–30.00 m/s)

Accuracy: $\pm 2\%$ of reading or ± 3 ft/min (0.015 m/s), whichever is greater

Temperature: Range: 15° to 160°F (-10° to +70°C)
Accuracy: $\pm 2^\circ\text{F}$ (1.1°C)

Stated temperature accuracy is in a minimum 50 ft/min (0.25 m/s) airflow.
This probe has significantly reduced temperature accuracy in still air due to heat generated by the "hotwire".

Probe Dimensions AS-201: 31.5" (800mm) L extended
14.9" (380mm) L collapsed

0.375" (9mm) diam. tip, 0.4375" (11mm) telescope base
1.5" (38mm) diameter handle, 7.25" (185mm) L

Probe Dimensions AS-202A: 37" (940mm) L extended
21" (530mm) L collapsed

6" (150mm) L tip articulates to 180°, 90°, or 45°
0.375" (9mm) diam. tip, 0.4375" (11mm) telescope base
1.5" (38mm) diameter handle, 7.25" (185mm) L

Weight (probe): w/batteries 13 oz (375 gm)

Power (probe): 2 x AA cells; typical battery life 50 hrs.

Typical AdvancedSense (rechargeable) battery life is >30 hours.
Typical Tablet battery life is >8 hours. Probes may be powered by the AdvancedSense or Tablet, bypassing internal batteries.

PC Software Requirements: Windows 8/7/XP
30MB hard disc (min.) space

GRAYWOLF SOFTWARE IS 21 CFR PART 11 COMPLIANT
SPECIFICATIONS ARE SUBJECT TO CHANGE WITHOUT FURTHER NOTICE

- The **DirectSense AIR TAB** is a complete kit that includes an **MN8-08** 8" tablet computer, **AS-201** airspeed probe, **WolfSense LAP** application software, **WolfSense PC** data transfer/reporting software, **PCC-MN8-8** tablet pouch, **PCC-22AS** hardshell case and more.
The **AdvancedSense AIR** kit is the same as above, but includes an **AdvancedSense** meter, in place of the Tablet PC, and a **PCC-AS01** meter pouch.
- Alternative kits (with or without Mobile PC or AdvancedSense) can be ordered to meet your specific needs. Contact GrayWolf for details.
- All factory calibrations are performed with NIST traceable equipment. Certificates of traceability are available.



GRAYWOLF[®] SENSING SOLUTIONS

6 RESEARCH DRIVE (WORLDWIDE HEADQUARTERS)

SHELTON, CT 06484 USA

PH. (1)203-402-0477

800-218-7997

FAX: (1)203-402-0478

EMAIL: SALESTEAM@GRAYWOLFSENSING.COM

WWW.GRAYWOLFSENSING.COM

MEASURE SMART

PCC-22AS Hard-shell carrying case for AdvancedSense or Tablet PCs

REPORT EFFICIENTLY

PIT-229MS standard pitot tube
(operates w/optional **DP-702LH** ΔP sensor in AdvancedSense) ▼



AS-202A on **ACC-TPD1** tripod with **ACC-TPD-AS** fitting ▼



ACC-TPD-AS ▼



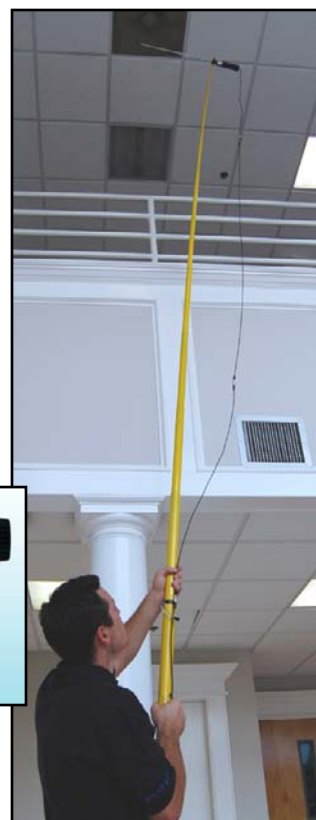
AS-201 on **ACC-XT-ROD** extension rod, **ACC-EX4-L8** 4m (14 ft) extension cable and **ACC-TPD-AS** fitting



▲ **PCC-AS01** pouch for AdvancedSense (comes w/belt loop and neck strap)



▲ Protective nylon pouch with hand strap for secure grasp of Tablet PCs. Also includes neck strap and built-in stand. Specify **PCC-MN8-8** (8") or **PCC-MN8-10** (10") tablet versions.



GRAYWOLF[®] SENSING SOLUTIONS

ANNACOTTY INDUSTRIAL PARK, UNIT 1C

ANNACOTTY, COUNTY LIMERICK

IRELAND

PH. (353) 61358044

FAX: (353) 61358160